



Republic of Serbia
Ministry of Energy, Development and Environmental Protection
Serbian Environmental Protection Agency

Regional workshop on SoE water quantity reporting
10-11 January 2013, Skopje, FYROM

SERBIAN WATER QUANTITY REPORTING

Tatjana Dopuđa - Glišić
Milorad Jovičić
Nebojša Veljković

www.sepa.gov.rs

Legal framework

Law on Ministries (Official Gazette of RS No. 72/2012)

Serbian Environmental Protection Agency functions as an administrative body of the Ministry of Energy, Development and Environmental Protection, performing duties related to:

- Development, approximation and management of national environmental information system (monitoring the state of environment factors, National registry of pollution sources, etc.)
- Implementation of state monitoring of air, surface and ground **water quality** (without drinking water quality), sediment and precipitation quality;
- Management of the national laboratories;
- Collecting and consolidating environment data, their processing and writing reports on the state of the environment and implementation of environmental policy;
- Developing a procedure for environment data processing and assessment;
- Cooperation with European Environment Agency (EEA) and European Information and Observation Network (EIONET);

Legal framework

Decree on National List of Environmental Indicators (Official Gazette of RS, No. 37/11)

"Decree on National List of Environmental Indicators", was prepared by SEPA in cooperation with many national institutions and adopted in May 2011. This Decree defining a set of 81 national environmental indicators.

Water quantity indicators are:

- Water exploitation index
- Household water use per capita
- Water losses
- Changes in reservoir storage
- Reuse and recycling of freshwater

The institutions responsible for these indicators:

- Republic Hydrometeorological Service of Serbia
- Directorate of Water-Ministry of agriculture, forestry and water management
- Statistical Office of the Republic of Serbia

Questionnaire for the Water Quantity Workshop 2012-13

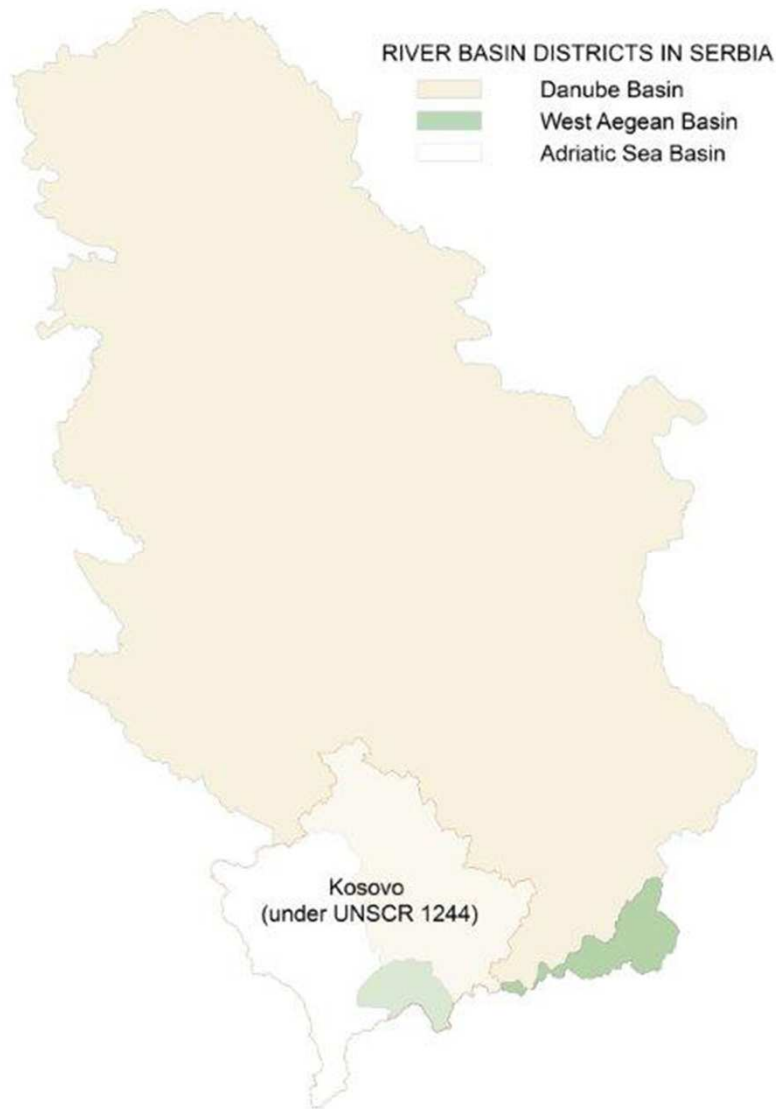
Statistical Office of the Republic of Serbia

		Responsibilities (mark with X)			
Name of the Institution	Data type (e.g. river discharge, reservoir in/outflow, water abstraction, water use)	Measurements, data collection	Quality control	Data analysis and processing	Dissemination/publication of information
Statistical Office of the Republic of Serbia -SORS	Water abstraction, water use, water losses, population connected on public water supply network, wastewater	X	X	X	X

Water abstraction components	Reporting Unit (RBD, Subunit, NUTS, Country)	Length of available time series (YYYY – YYYY)
Total Volume of freshwater abstraction (from both SW + GW)	Country, RBD, NUTS1	2000-2011
Total Volume of freshwater abstraction for public water supply systems (from both SW + GW)	Country RBD, NUTS1, NUTS2	2004-2011
Total Volume of freshwater abstraction (from both SW + GW) for self-supply and breakdown per sector (according to NACE classes)	Country, RBD, NUTS1, NUTS2	2000-2011

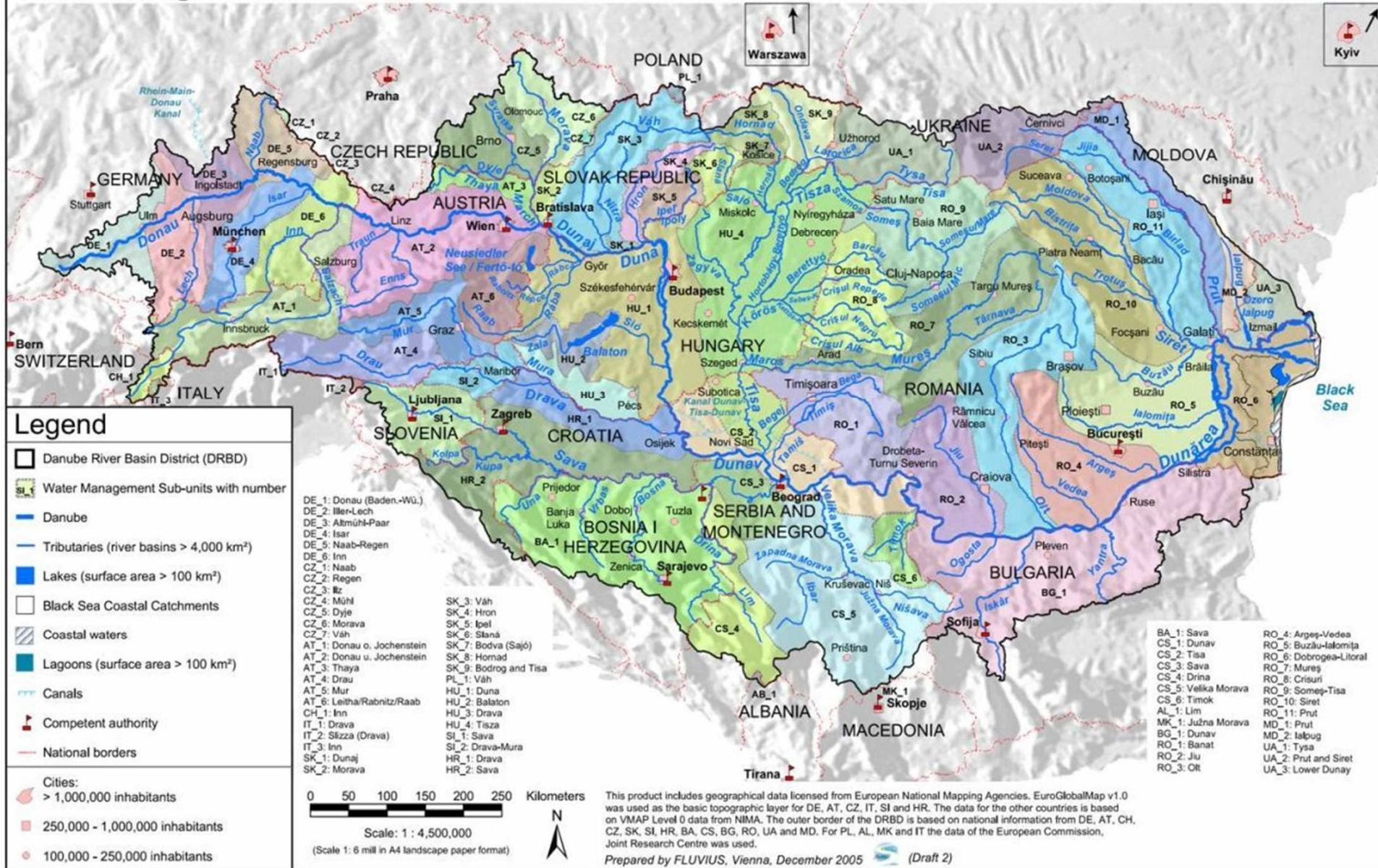
Water use components	Reporting Unit (RBD, Subunit, NUTS, Country)	Length of available time series (YYYY – YYYY)
Total Volume of freshwater used and breakdown by sector (according to NACE classes)	Country, RBD, NUTS1	2000-2011
Total volume of freshwater used provided by public water supply systems and breakdown by sector (according to NACE classes)	Country RBD, NUTS1, NUTS2	2004-20011
Total volume of freshwater used provided by self-supply and breakdown by sector(according to NACE classes)	Country, RBD, NUTS1, NUTS2	2000-2011

River Basin Districts in Serbia

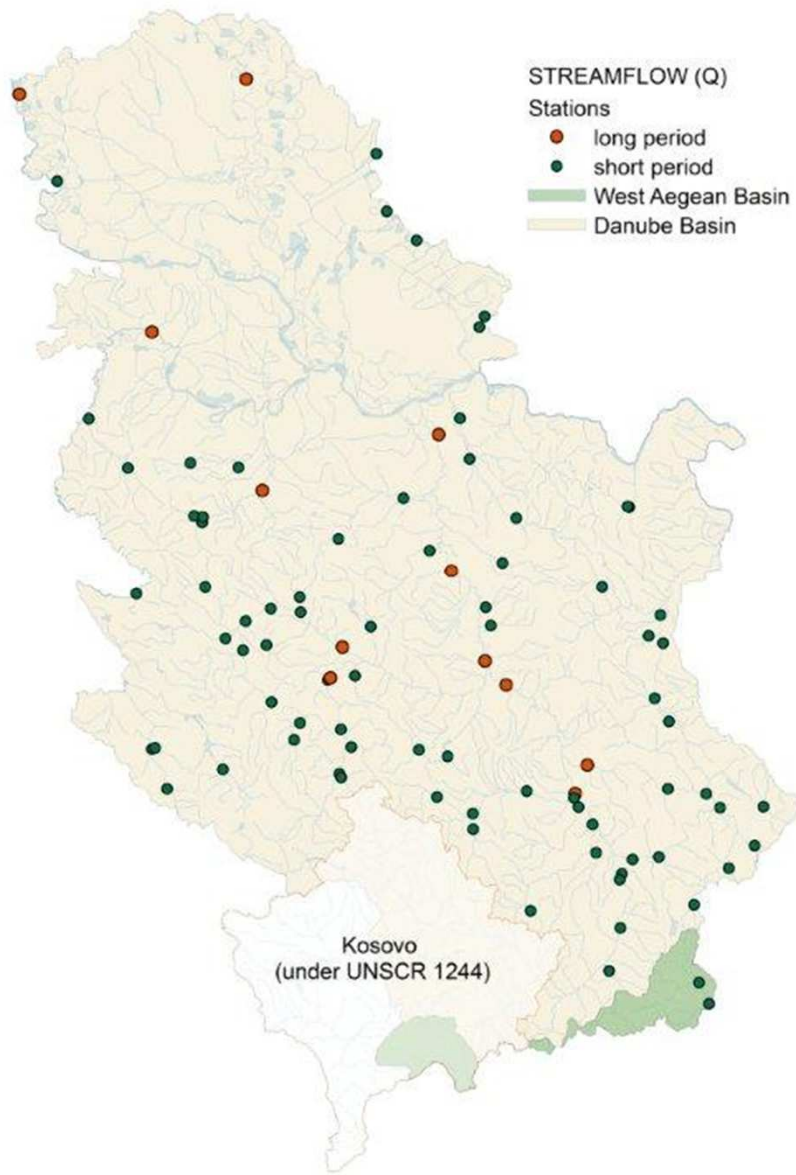


Country	Serbia without Kosovo (under UNSCR 1244)	
Type	River Basin District	River Basin District
Name	Danube Basin	West Aegean Basin
Code	(RS1000)	(RS4000)
Area (km ²)	76224	1250 (50+510+690)
Area (%)	98.39	1.61 (0.06+0.66+0.89)

Danube River Basin District Water Management Sub-units

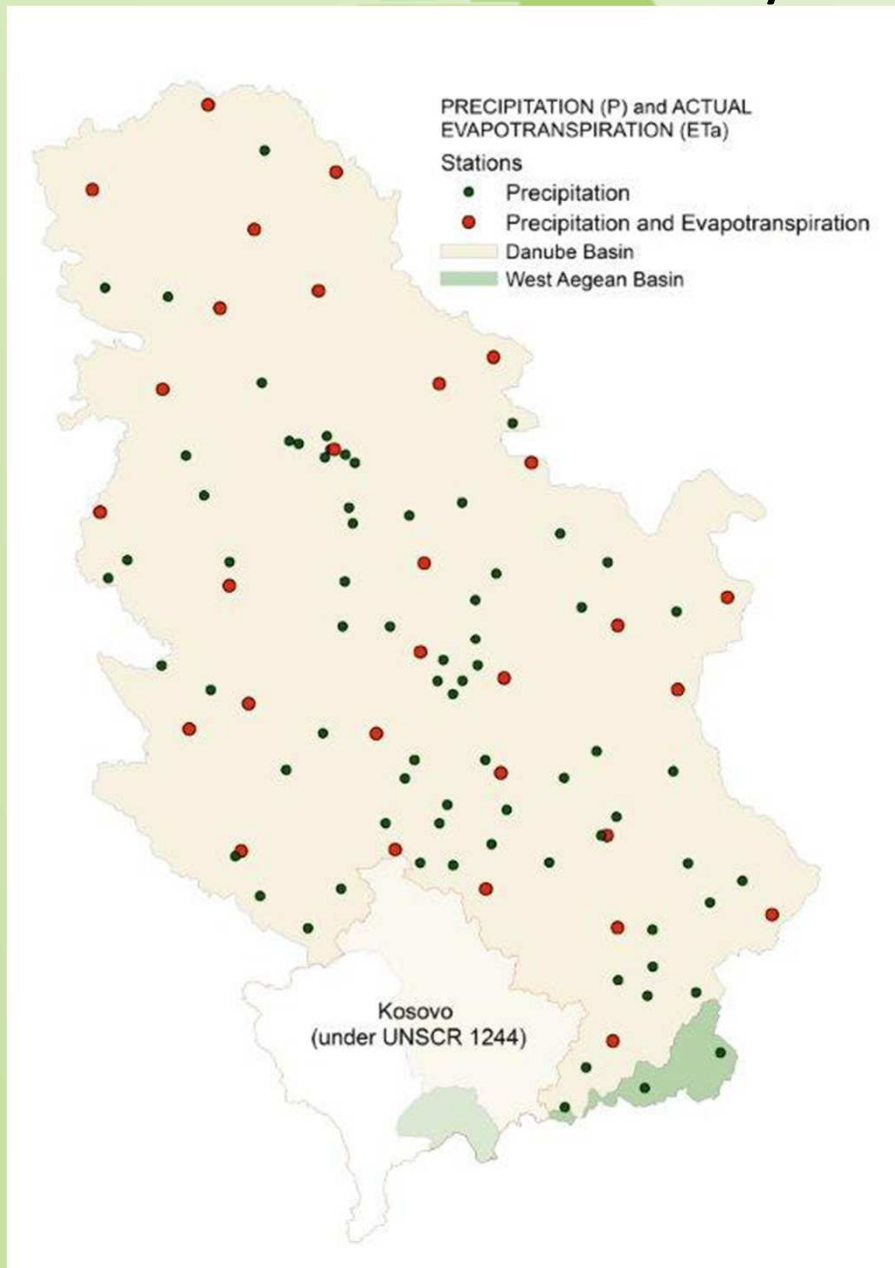


Reported parameters until now



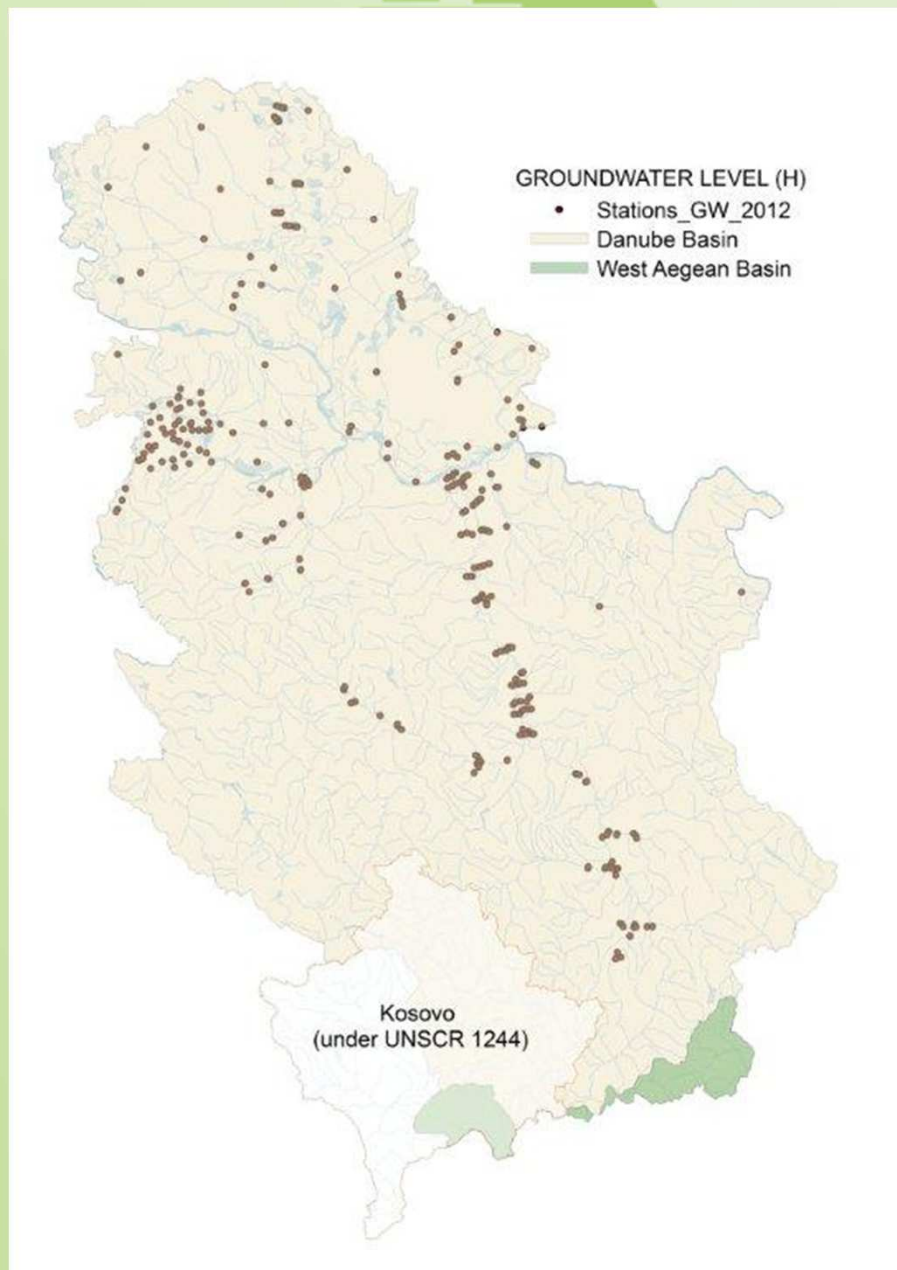
Reported Number of Streamflow stations (Daily data at country level)	Period of reporting	Date of reporting
92	2008	29/10/2009
91	2009	30/10/2010
89	2010	28/10/2011
12	1996-2010	23/09/2011
84	2011	29/10/2012

Possibility for future reporting



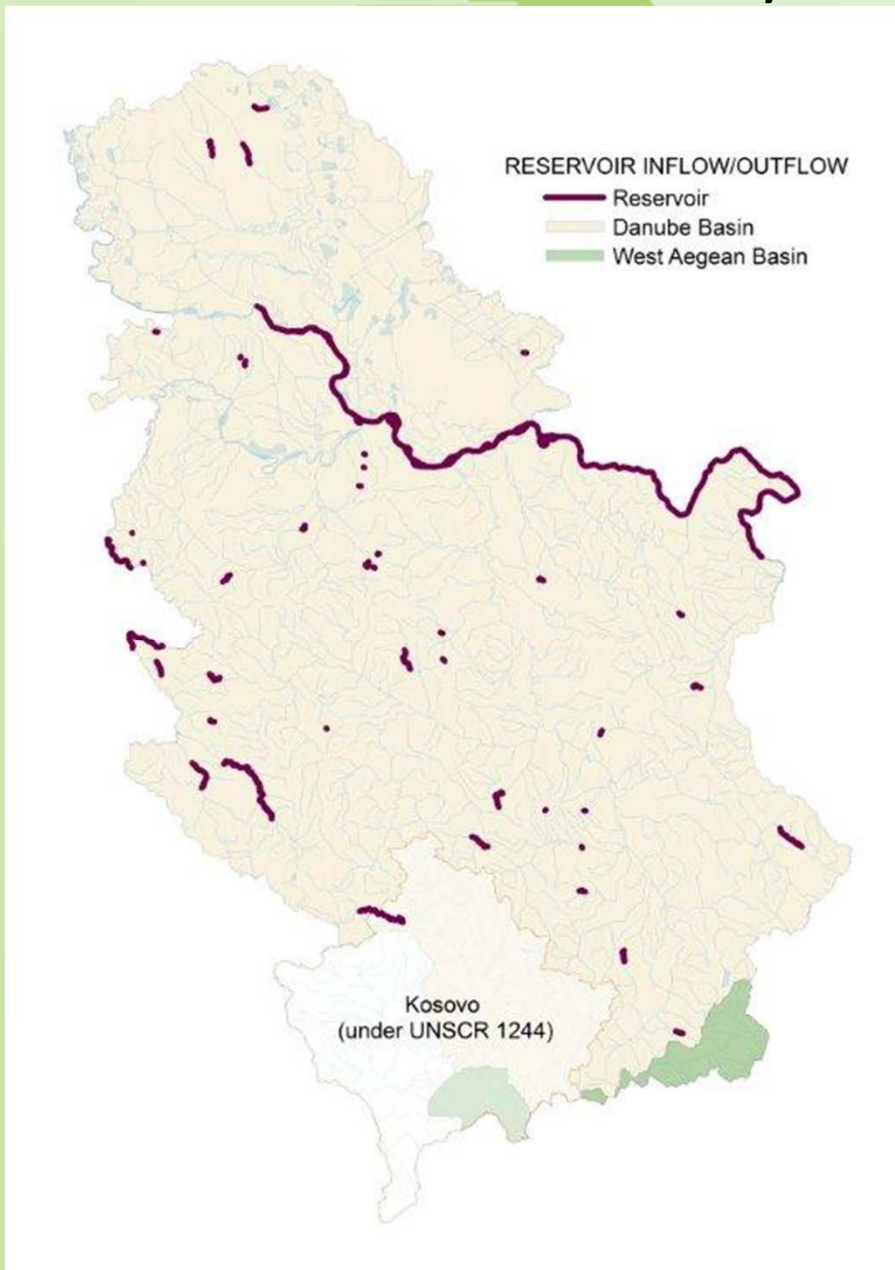
Country	Serbia without Kosovo (under UNSCR 1244)	
Type	River Basin District	River Basin District
Name	Danube Basin	West Aegean Basin
Number of Actual ETa and (precipitation) stations	30 (100)	0(2)

Possibility for future reporting



Country	Serbia without Kosovo (under UNSCR 1244)	
Type	River Basin District	River Basin District
Name	Danube Basin	West Aegean Basin
Number of Groundwater Level station	406 (Year 2012)	0

Possibility for future reporting



Country	Serbia without Kosovo (under UNSCR 1244)	
Type	River Basin District	River Basin District
Name	Danube Basin	West Aegean Basin
Number of Reservoirs	51	0

For the end

If we want good informations we must have **correct** data.

With data we make indicators and indexes.

Why ?!

Indicator is something that help us to know where we are, where should we go and how far are we from our destination

Serbian Environmental Protection Agency



The End

copyright 2005 | PlumDesign

Thank you !

Serbian Environmental Protection Agency